

# Semiconductor Fair Value Model Update

Equity | Global | Semiconductors  
13 June 2006



## Merrill Lynch

Joe Osha +1 415 676 3510  
Research Analyst  
MLPF&S  
joe\_osha@ml.com

Andrew Griffin >> +44 20 7996 1414  
Research Analyst  
MLPF&S (UK)  
andrew\_griffin@ml.com

## Updated semiconductor fair value model available

Our updated semiconductor fair value model is now available. The normalized SOX fair value is now at 520, 19% above the current SOX value of 436.

## Careful with those options expenses

Some investors may be tempted to ignore the options compensation element to our model, but we urge caution. Options compensation expense may be noncash, but it is definitely not imaginary. Companies are spending real money to buy back stock, or seeing earnings diluted, as a result of the options they grant to employees. Our returns model captures the resulting transfer of wealth, and we don't think that investors can simply ignore the conclusions. The summary table on the right shows the results of our model *including* the impact of options, which is the right way to think about it in our opinion.

## Overview of the model

The model calculates a fair value based on intuitive inputs including revenue growth, operating margin, options expense, restricted stock expense, tax rate, working capital, and capital spending. We recognize that different operating environments can have widely disparate impacts on earnings multiples, and so the model calculates a high end and a low end to the range, centered around a normalized midpoint fair value.

## An interactive tool

Summary data are included herein based on Merrill Lynch analysts' estimates and assumptions, but as always, we're encouraging investors to work with the model and test out their own assumptions. The working model is available at [www.ml.com](http://www.ml.com) under the ticker "SEMIFV."

A direct download of the file is also available by using the following URL:

<http://www.cwes01.com/10323/24704/MLSemiFV6-13-2006.zip>

Table1: Mid-Cycle Fair Value Summary

Ticker	Fair Value			Curr Price	Upside (Downside)
	Low	Norm	Peak		
<b>PC / Graphics / Memory</b>					
AMD	17.6	28.4	45.9	26.8	6%
ATYT	14.4	19.8	27.4	15.4	28%
INTC	14.9	21.1	30.3	17.2	23%
MU	4.7	14.0	29.7	15.5	-10%
NVDA	16.5	22.5	30.9	21.4	5%
SNDK	35.5	53.8	82.4	52.3	3%
SPSN	(0.5)	14.3	39.8	14.3	0%
<b>Analog / Mixed-Signal</b>					
AATI	11.3	14.9	20.1	11.1	35%
AMIS	6.3	9.1	12.9	9.8	-6%
ADI	33.6	41.6	52.1	32.5	28%
FCS	12.2	18.9	28.3	16.4	15%
FSL	27.4	35.8	46.5	28.4	26%
ISIL	21.9	28.1	36.8	23.6	19%
LLTC	28.5	35.5	45.1	34.7	2%
MXIM	33.0	43.9	59.5	31.2	41%
MCHP	28.8	36.2	46.6	33.4	9%
MPWR	9.5	14.3	21.9	13.0	10%
NSM	22.4	29.5	39.6	24.5	21%
SMTC	12.5	15.5	19.6	15.6	-1%
TXN	23.2	30.2	39.6	29.7	2%
<b>Comm IC</b>					
AGR	8.9	14.2	21.6	14.2	0%
BRCM	25.0	35.8	52.2	29.3	22%
CNXT	1.1	2.3	3.9	2.4	-7%
CY	10.7	18.8	31.3	14.5	30%
IDTI	7.8	11.9	18.0	14.7	-19%
LSI	8.1	11.4	16.2	8.9	28%
MRVL	38.2	55.3	80.3	47.5	16%
NETL	15.6	22.7	32.8	30.1	-25%
RFMD	1.9	6.3	14.4	7.1	-11%
SLAB	26.9	35.4	47.2	36.3	-2%
SWKS	2.6	5.9	10.9	5.7	3%
<b>PLD</b>					
ALTR	14.2	19.3	26.6	17.8	8%
XLNX	21.1	28.4	38.9	25.0	14%

Source: Merrill Lynch.

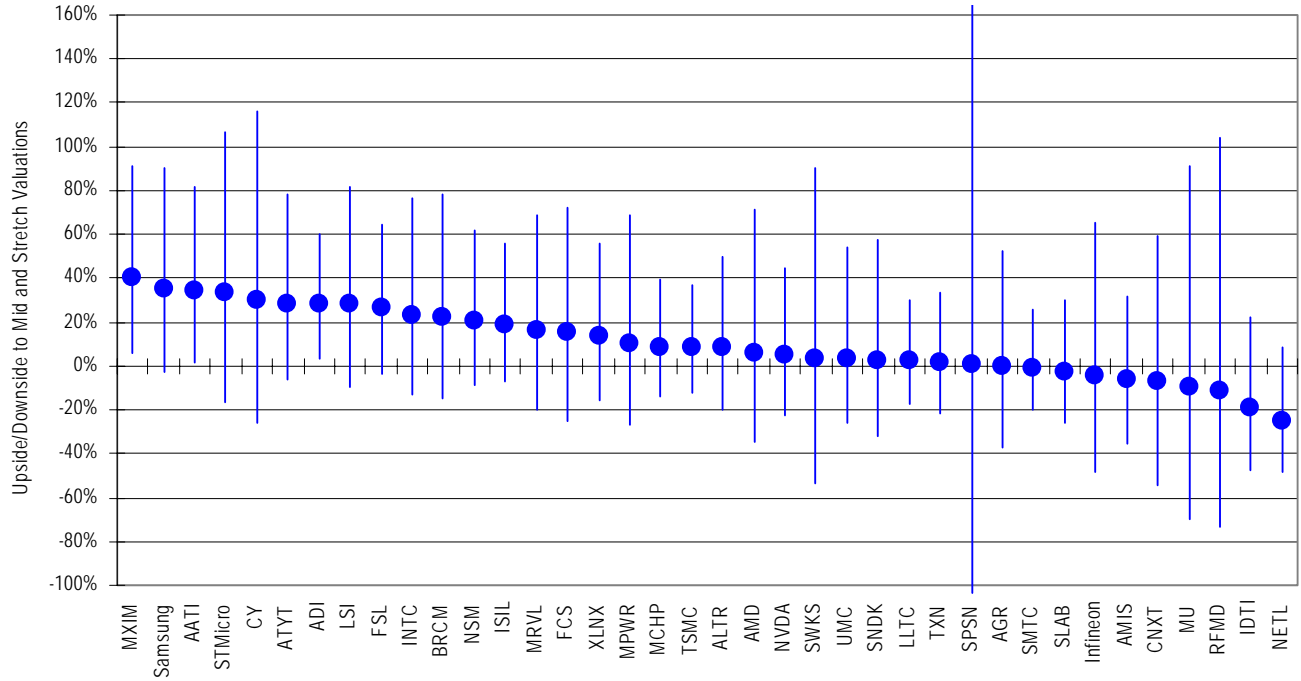
\*Analysis includes option expensing.

>> Employed by a non-US affiliate of MLPF&S and is not registered/qualified as a research analyst under the NYSE/NASD rules.

Merrill Lynch does and seeks to do business with companies covered in its research reports. As a result, investors should be aware that the firm may have a conflict of interest that could affect the objectivity of this report. Investors should consider this report as only a single factor in making their investment decision.

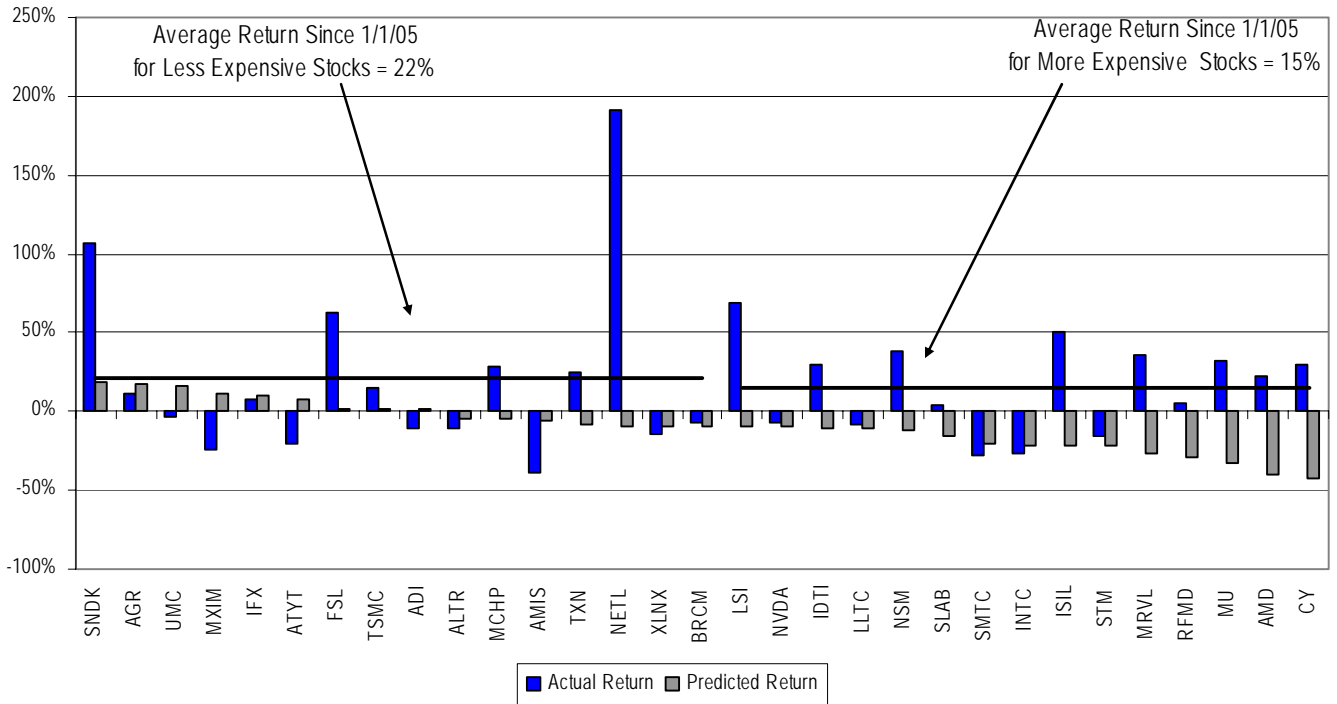
Refer to important disclosures on page 4 to 5. Analyst Certification on page 3.

Chart 1: Current Mid-Cycle Semiconductor Fair Value Upside/Downside Analysis



Source: Merrill Lynch.  
\*Analysis includes option expensing.

Chart 2: Merrill Lynch Semiconductor Fair Value Model Return Analysis



Source: Merrill Lynch.

## Analyst Certification

I, Joe Osha, hereby certify that the views expressed in this research report accurately reflect my personal views about the subject securities and issuers. I also certify that no part of my compensation was, is, or will be, directly or indirectly, related to the specific recommendations or view expressed in this research report.

## Important Disclosures

**FUNDAMENTAL EQUITY OPINION KEY:** Opinions include a Volatility Risk Rating, an Investment Rating and an Income Rating. **VOLATILITY RISK RATINGS**, indicators of potential price fluctuation, are: A - Low, B - Medium, and C - High. **INVESTMENT RATINGS**, indicators of expected total return (price appreciation plus yield) within the 12-month period from the date of the initial rating, are: 1 - Buy (10% or more for Low and Medium Volatility Risk Securities - 20% or more for High Volatility Risk securities); 2 - Neutral (0-10% for Low and Medium Volatility Risk securities - 0-20% for High Volatility Risk securities); 3 - Sell (negative return); and 6 - No Rating. **INCOME RATINGS**, indicators of potential cash dividends, are: 7 - same/higher (dividend considered to be secure); 8 - same/lower (dividend not considered to be secure); and 9 - pays no cash dividend.

---

The analyst(s) responsible for covering the securities in this report receive compensation based upon, among other factors, the overall profitability of Merrill Lynch, including profits derived from investment banking revenues.

## Other Important Disclosures

UK readers: MLPF&S or an affiliate is a liquidity provider for the securities discussed in this report.

---

### Information relating to Non-U.S. affiliates of Merrill Lynch, Pierce, Fenner & Smith Incorporated (MLPF&S):

MLPF&S distributes research reports of the following non-US affiliates in the US (short name: legal name): Merrill Lynch (France): Merrill Lynch Capital Markets (France) SAS; Merrill Lynch Dublin (Frankfurt Branch): Merrill Lynch CMB Ltd, Dublin, Frankfurt Branch; Merrill Lynch (South Africa): Merrill Lynch South Africa (Pty) Ltd; Merrill Lynch (Milan): Merrill Lynch Capital Markets Bank Limited; MLPF&S (UK): Merrill Lynch, Pierce, Fenner & Smith Limited; Merrill Lynch (Australia): Merrill Lynch Equities (Australia) Limited; Merrill Lynch (Hong Kong): Merrill Lynch (Asia Pacific) Limited; Merrill Lynch (Singapore): Merrill Lynch (Singapore) Pte Ltd; Merrill Lynch (Canada): Merrill Lynch Canada Inc; Merrill Lynch (Mexico): Merrill Lynch Mexico, SA de CV, Casa de Bolsa; Merrill Lynch (Argentina): Merrill Lynch Argentina SA; Merrill Lynch (Brazil): Banco Merrill Lynch de Investimentos SA; Merrill Lynch (Japan): Merrill Lynch Japan Securities Co, Ltd; Merrill Lynch (Seoul): Merrill Lynch International Incorporated (Seoul Branch); Merrill Lynch (Taiwan): Merrill Lynch Taiwan Limited; DSP Merrill Lynch (India): DSP Merrill Lynch Limited; PT Merrill Lynch (Indonesia): PT Merrill Lynch Indonesia; Merrill Lynch (KL) Sdn. Bhd.: Merrill Lynch (Malaysia); Merrill Lynch (Israel): Merrill Lynch Israel Limited; Merrill Lynch (Russia): Merrill Lynch CIS Limited, Moscow.

This research report has been prepared and issued by MLPF&S and/or one or more of its non-U.S. affiliates. MLPF&S is the distributor of this research report in the U.S. and accepts full responsibility for research reports of its non-U.S. affiliates distributed in the U.S. Any U.S. person receiving this research report and wishing to effect any transaction in any security discussed in the report should do so through MLPF&S and not such foreign affiliates.

This research report has been approved for publication in the United Kingdom by Merrill Lynch, Pierce, Fenner & Smith Limited, which is authorized and regulated by the Financial Services Authority; has been considered and distributed in Japan by Merrill Lynch Japan Securities Co, Ltd, a registered securities dealer under the Securities and Exchange Law in Japan; is distributed in Hong Kong by Merrill Lynch (Asia Pacific) Limited, which is regulated by the Hong Kong SFC; is issued and distributed in Taiwan by Merrill Lynch (Taiwan) Ltd or Merrill Lynch, Pierce, Fenner & Smith Limited (Taiwan Branch); is issued and distributed in Malaysia by Merrill Lynch (KL) Sdn. Bhd., a licensed investment adviser regulated by the Malaysian Securities Commission; and is issued and distributed in Singapore by Merrill Lynch International Bank Limited (Merchant Bank) and Merrill Lynch (Singapore) Pte Ltd (Company Registration No. 198602883D). Merrill Lynch International Bank Limited and Merrill Lynch (Singapore) Pte Ltd. are regulated by the Monetary Authority of Singapore. Merrill Lynch Equities (Australia) Limited, (ABN 65 006 276 795), AFS License 235132, provides this report in Australia. No approval is required for publication or distribution of this report in Brazil. Merrill Lynch Dublin is regulated by BaFin.

### Copyright, User Agreement and other general information related to this report:

Copyright 2006 Merrill Lynch, Pierce, Fenner & Smith Incorporated. All rights reserved. This research report is prepared for the use of Merrill Lynch clients and may not be redistributed, retransmitted or disclosed, in whole or in part, or in any form or manner, without the express written consent of Merrill Lynch. Merrill Lynch research reports are distributed simultaneously to internal and client websites eligible to receive such research prior to any public dissemination by Merrill Lynch of the research report or information or opinion contained therein. Any unauthorized use or disclosure is prohibited. Receipt and review of this research report constitutes your agreement not to redistribute, retransmit, or disclose to others the contents, opinions, conclusion, or information contained in this report (including any investment recommendations, estimates or price targets) prior to Merrill Lynch's public disclosure of such information. The information herein (other than disclosure information relating to Merrill Lynch and its affiliates) was obtained from various sources and we do not guarantee its accuracy.

This research report provides general information only. Neither the information nor any opinion expressed constitutes an offer or an invitation to make an offer, to buy or sell any securities or other investment or any options, futures or derivatives related to such securities or investments. It is not intended to provide personal investment advice and it does not take into account the specific investment objectives, financial situation and the particular needs of any specific person who may receive this report. Investors should seek financial advice regarding the appropriateness of investing in any securities, other investment or investment strategies discussed or recommended in this report and should understand that statements regarding future prospects may not be realized. Investors should note that income from such securities or other investments, if any, may fluctuate and that price or value of such securities and investments may rise or fall. Accordingly, investors may receive back less than originally invested. Past performance is not necessarily a guide to future performance. Any information relating to the tax status of financial instruments discussed herein is not intended to provide tax advice or to be used by anyone to provide tax advice. Investors are urged to seek tax advice based on their particular circumstances from an independent tax professional.

Foreign currency rates of exchange may adversely affect the value, price or income of any security or related investment mentioned in this report. In addition, investors in securities such as ADRs, whose values are influenced by the currency of the underlying security, effectively assume currency risk.

Officers of MLPF&S or one or more of its affiliates (other than research analysts) may have a financial interest in securities of the issuer(s) or in related investments.

Merrill Lynch Research policies relating to conflicts of interest are described at <http://www.ml.com/media/43347.pdf>.

iQanalytics, iQcustom, iQdatabase, iQmethod, iQmethod 2.0, iQprofile, iQtoolkit, iQworks are service marks of Merrill Lynch & Co., Inc.

Fundamental equity reports are produced on a regular basis as necessary to keep the investment recommendation current.